



the *Township*
and its promise



Krishna Bhumi.

The chance to spend a lifetime
living blessed.

In a gated community, in close
communion with Lord Krishna.





Aesthetically planned, with every apartment overlooking lush greens, an apartment at Krishna Bhumi is much more than just four walls. The entire initiative stems from the idea of creating the possibility of existing in a state of perpetual union with Lord Krishna.

Artist's impression of the iconic Vrindavan Chandrodaya Mandir in Krishna Bhumi

Introducing



An opportunity to reside in a grand township that not only offers world-class living spaces, but is also immersed in love and devotion to Lord Krishna.

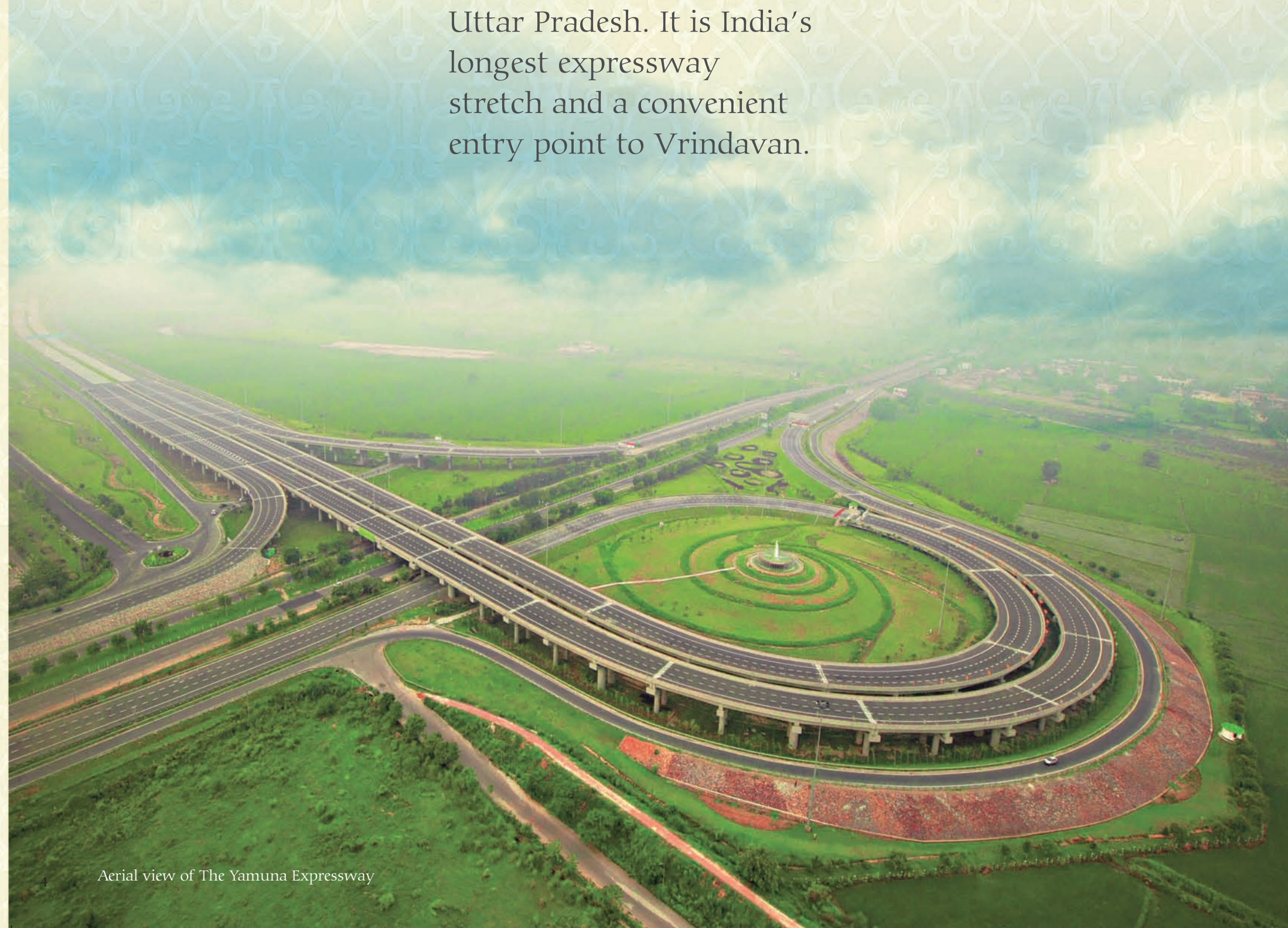
Right at the feet of Vrindavan Chandrodaya Mandir, the world's tallest Krishna temple.



The Yamuna Expressway is a 6-lane, 165 km long, controlled-access expressway, connecting Greater Noida with Agra in the Indian state of Uttar Pradesh. It is India's longest expressway stretch and a convenient entry point to Vrindavan.

Connectivity

- NH2 (Delhi-Agra): 2 km
- Vrindavan Rly. Stn.: 3 km
- Yamuna Expressway: 12 km
- Mathura City: 10 km
- Mathura Rly. Stn.: 11 km
- Delhi Airport: 160 km



Aerial view of The Yamuna Expressway

Krishna Bhumi is located on the Bhaktivedanta Swami Marg (Chhatikara Road), in the heart of Vrindavan.

Nearby destinations

- Maa Vaishno Devi Dham: 1 km
- Prem Mandir: 2 km
- ISKCON Temple: 2.5 km
- Bankey Bihari Temple: 4.5 km
- Radha Ballabh Mandir: 4.5 km
- Nidhivan: 4.5 km
- Gopinath Temple: 4.5 km
- Madan Mohan Temple: 4.5 km
- Holy Yamuna River: 4.5 km
- Rangnath Temple: 5.5 km
- Govardhan: 22 km





A skyscraper temple of Lord Sri Krishna

Project conceived by devotees of:



Vrindavan Chandrodaya Mandir at 700 feet will be the tallest Krishna temple in the world.

- Conceived by devotees of ISKCON-Bangalore.
- The iconic temple spans 5 acres.
- It houses the grand temple hall with Sri Radha Vrindavan Chandra Mandir along with the Sri Chaitanya Mahaprabhu Mandir and Srila Prabhupada Mandir in different wings.
- It also features a Krishna Heritage Museum, study centre, festival and lecture halls and a viewing gallery at 700 feet.
- Added attractions include a vedic cosmology exhibit and a massive indoor Krishna Lila Park with boat rides.
- Indoor Theme park which will have Srila Prabhupada Expo, Large Auditorium, Children activity zone, Animation movie theatre, Souvenirs, Dwaraka underwater exploration.



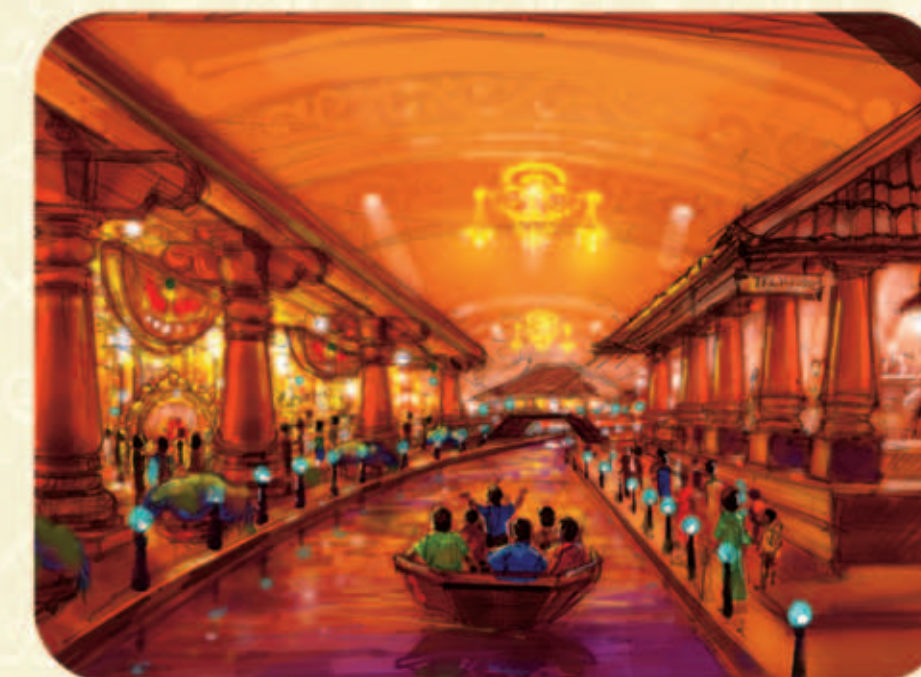
Artist's impression of the Vrindavan Chandrodaya Mandir



The Grand Temple Hall



Krishna Theme Park



Indoor Krishna Lila Park

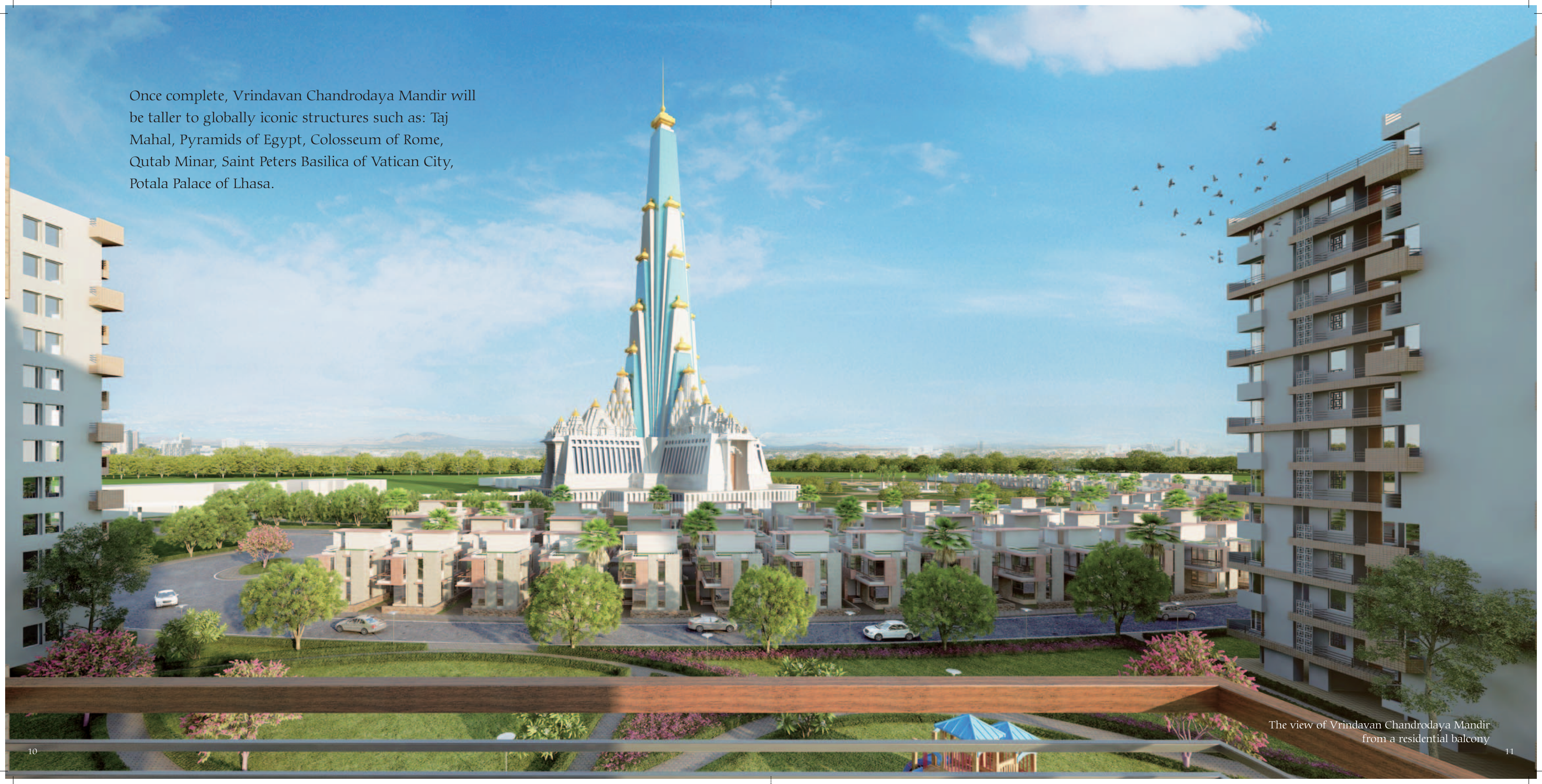


Vedic Cosmopolitan Exhibit



Dvadasha Kanana - the 12 recreated forests

Once complete, Vrindavan Chandrodaya Mandir will be taller to globally iconic structures such as: Taj Mahal, Pyramids of Egypt, Colosseum of Rome, Qutab Minar, Saint Peters Basilica of Vatican City, Potala Palace of Lhasa.



The view of Vrindavan Chandrodaya Mandir from a residential balcony

Luxury villas with a timeless and unobstructed
view of the Vrindavan Chandrodaya Mandir



Evening view of Vrindavan Chandrodaya Mandir



The promise of Living blessed

Krishna Bhumi comes with a host of carefully planned and crafted amenities to ensure an abode of peace and good living. Come live blessed!





Vast Green area



Krishna Bhumi offers acres of greenery and well manicured sprawling stretches. It is a place to be one with God and nature.

Spa & ayurveda



At Krishnabhumi, besides your spiritual well being, there is also a world class Spa & Ayurveda for you to indulge in.





Elder care



For the convenience of the elders in the family there will be doctors and nurses on call and a diagnostic and medical centre. Ramps will be provided for easy access to all parts of the building.



Diagnostic and care centre



A state-of-the-art healthcare centre with basic amenities for patient diagnosis and complete healthcare.



Swimming pool

A temperature-controlled swimming pool within the club for an early morning dip or an evening bout of rejuvenation.

Outdoor games

Step outdoors for a game of lawn tennis or badminton. With the kids or with friends. Revive a weekend.

Gym

Sweat it out at a state-of-the-art gym under the guidance of a trainer.



An inhouse lifestyle and wellness club equipped with all modern amenities will take care of rejuvenation and recreational needs of each family member.



Foodcourt

The Food Court will host a menu that will keep the taste buds satiated.





Convenience store

For your daily requirements we are providing a convenience store within the residential complex.



Laundromat

A fully functional and equipped Laundromat with washing machines and dryers.



high Security & surveillance

The gated community will have 24 x 7 security and CCTV surveillance for the safety of all residents and their guests.



ample Parking

There will be ample parking for all residents and guests.



separate Access

to Vrindavan
Chandrodaya Mandir

There will be a separate exclusive access to the temple for all Krishna Bhumi residents. Also on festival days, they will have a dedicated queue.

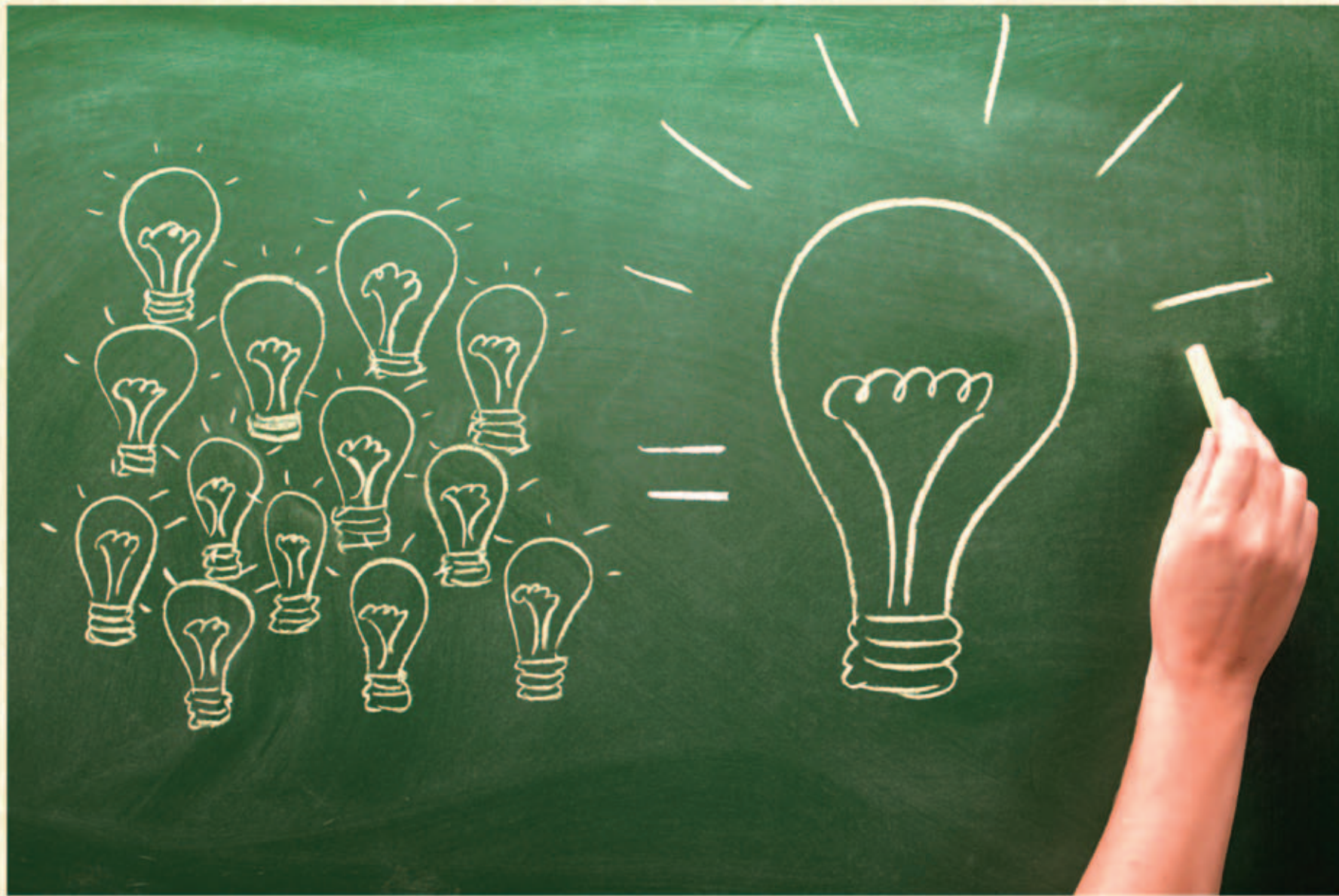
special Puja

at Vrindavan
Chandrodaya Mandir

Every apartment owner will get a special puja every year on the date of their choice.

coach service for Darshan

Avail of our complimentary coach service for *darshan* at Bankebihari temple, ISKCON temple and Prem mandir.



A premier educational
institute within the complex.



Well-serviced 5star apartments
for guests who decide to visit
you in your second home.

Come
Live blessed!

